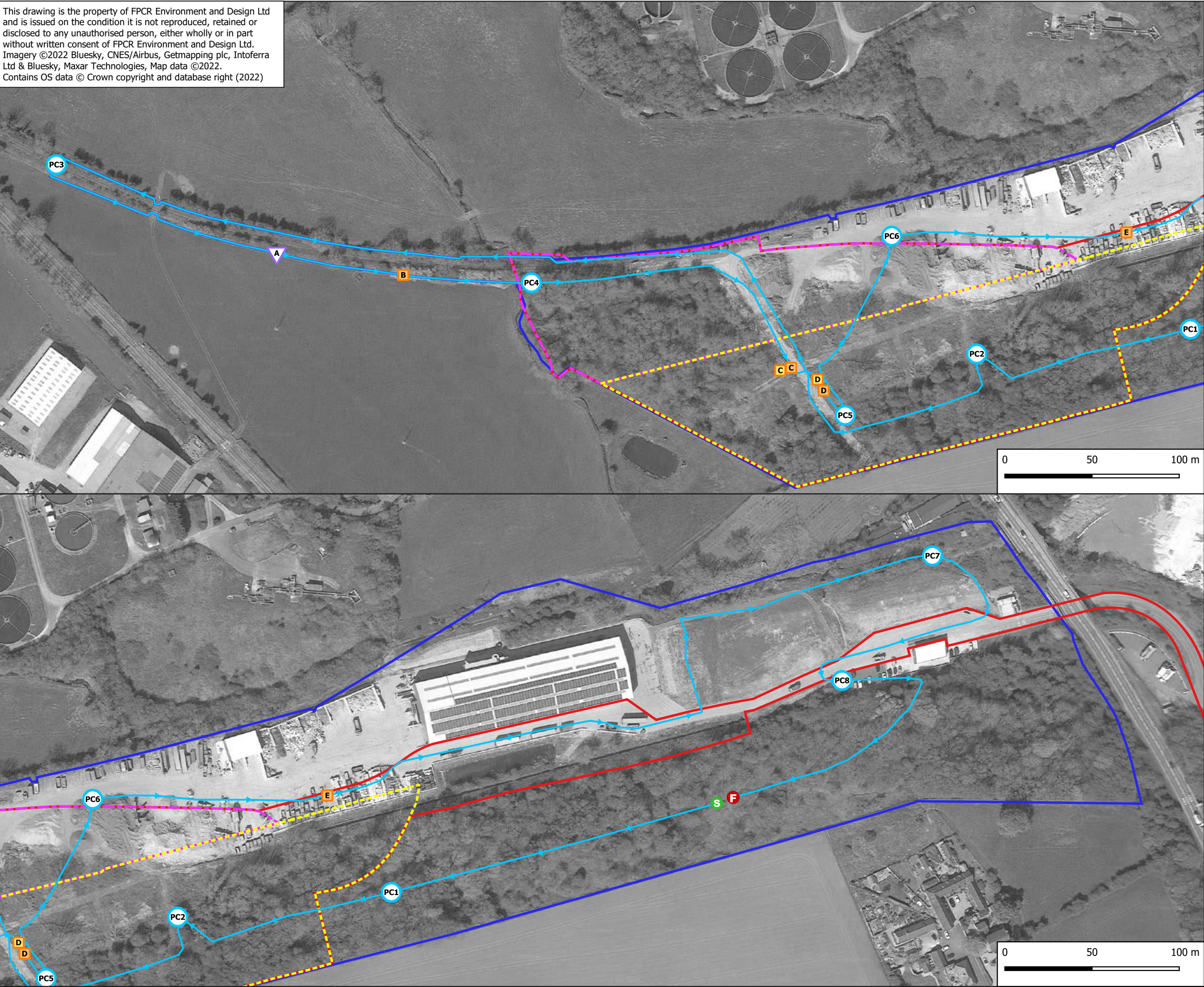


This drawing is the property of FPCR Environment and Design Ltd and is issued on the condition it is not reproduced, retained or disclosed to any unauthorised person, either wholly or in part without written consent of FPCR Environment and Design Ltd. Imagery ©2022 Bluesky, CNES/Airbus, Getmapping plc, Intoferra Ltd & Bluesky, Maxar Technologies, Map data ©2022. Contains OS data © Crown copyright and database right (2022)



Key

- SRRP Planning Application Red Line Boundary
- Ecology Survey Area
- Aggregate Recovery Facility (ARF) Boundary
- Energy Recovery Facility (ERF) Boundary

Start point

Finish point

Point Count Location (with reference)

Transect Route

Bat Contact (with reference*)

Common Pipistrelle

Soprano Pipistrelle

Nyctalus Species

Date	14/10/2021
Start Time	18:13
End Time	20:13
Sunset	18:13
Start Temp	14C
End Temp	12C
Cloud Cover	90%
Wind	2
Rain	0

Ref.	Time	Species	Behaviour	Passes	Comments
PC1	18:18 - 18:23	No Bats			
PC2	18:26 - 18:31	No Bats			
PC3	18:49 - 18:54				
i	18:54	S. Pip	Unknown	Unknown	
A	18:58	Nyctalus	Unknown	Unknown	
B	19:00	C. Pip	Unknown	2	
PC4	19:02 - 19:07				
ii	19:02	C. Pip	Commuting	2	
iii	19:07	Myotis	Commuting	2	
C	19:11	C. Pip; S. Pip	Foraging	Constant	
PC5	19:12 - 19:17				
iv	19:15	C. Pip	Foraging	3	NV
D	19:18	C. Pip; S. Pip	Foraging Social	5; Constant	NV
PC6	19:21 - 19:26				
v	19:25	C. Pip	Foraging	Constant	NV
E	19:27	C. Pip	Foraging	2	NV
PC7	19:47 - 19:57	No Bats			
PC8	20:05 - 20:10	No Bats			

* Lower case numerals denote bat contact within point count

A	29.09.22	Minor amendments	NJL/NJL
-	24.02.22	Initial draft	EH/NJL
rev	date	comment	drm/chk



client
R&P Clean Power Limited

project
Swadlincote Resource Recovery Park (SRRP)

drawing title
BAT TRANSECT SURVEY - OCTOBER



drawing / figure number
7233-ES-8.5-07

Date printed
29/9/2022